

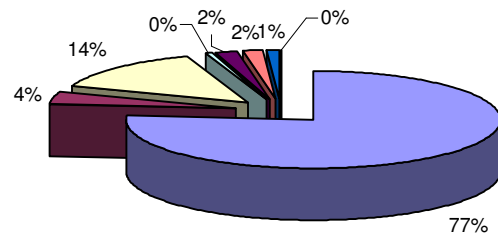
THE MIDDLE EAST COUNCIL OF CHURCHES

Statement of expenses by nature -Inter-Church Network for Development & Relief (ICNDR)

	2004	2005	2006	2007
	US\$	US\$	US\$	US\$
Programmes	305,758	328,978	139,122	127,600
Office & other expenses	22,098	11,164	9,078	6,700
Salaries & Benefits	53,624	40,108	44,709	30,000
Training	3,735	342	532	800
Travel & lodging	11,152	7,089	3,264	2,300
Workshops, seminars & meetings	21,117	-	-	-
Depreciation expenses	-	6,204	5,441	-
Audit & monitoring	-	-	-	-
Other expenses	10	-	-	-
Total expenses - ICNDR	417,494	393,885	202,146	167,400

- Programmes
- Office & other expenses
- Salaries & Benefits
- Training
- Travel & lodging
- Workshops, seminars & meetings
- Depreciation expenses
- Other expenses

Statement of expenses by nature
Inter-Church Network for Development & Relief (ICNDR)



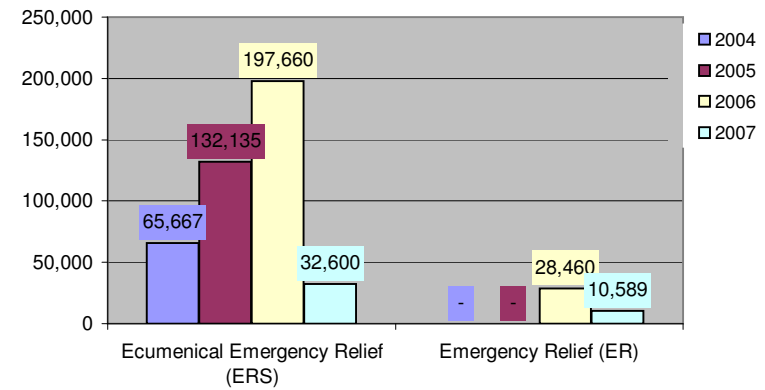
THE MIDDLE EAST COUNCIL OF CHURCHES

Statement of expenses by nature -Ecumenical Emergency Relief (ERS)

	2004 US\$	2005 US\$	2006 US\$	2007 US\$
Depreciation expense*	-	19,897	6,000	-
Programmes expenses	65,667	112,238	191,660	32,600
Total expenses - ERS	65,667	132,135	197,660	32,600

* Includes impairment charge of US\$ 9,714 for year 2005

Comparing Expenditures From 2004 till 2007 ERS / ER



Statement of expenses by nature -Emergency Relief (ER)

	2004 US\$	2005 US\$	2006 US\$	2007 US\$
Programmes	-	-	28,460	10,589
Total Expenses -ER	-	-	28,460	10,589