

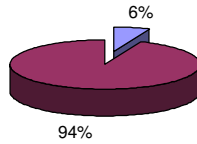
THE MIDDLE EAST COUNCIL OF CHURCHES

**Ecumenical Relief Services (ERS)
Income & expenditure in summary**

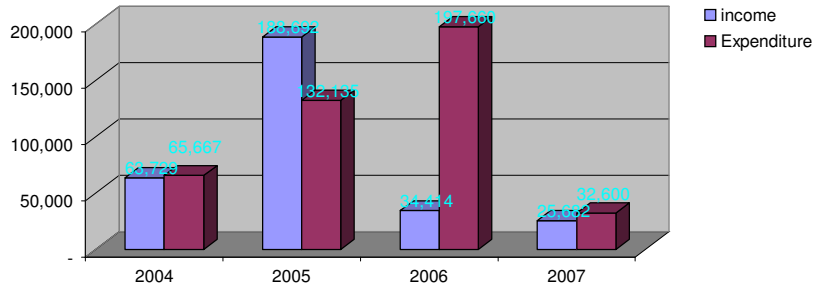
	<u>Audited</u>				<u>Un-audited</u>				Total Income
	Total 2004		Total 2005		Total 2006		Total 2007		
	US\$	%	US\$	%	US\$	%	US\$	%	
Income									
Churches	58,494	39%	56,500	38%	20,950	14%	13,000	9%	148,944
Council of Churches	-	0%	370	25%	-	0%	1,082	75%	1,452
Institutions	5,235	3%	120,762	80%	13,112	9%	12,700	8%	151,809
Other income	-	0%	11,060	95%	352	3%	200	2%	11,612
Total Income	63,729	20%	188,692	60%	34,414	11%	26,982	9%	313,817
Expenditure									
Depreciation expense	-	0%	19,897	77%	6,000	23%	-	0%	25,897
Programmes expenses	65,667	16%	112,238	28%	191,660	48%	32,600	8%	402,165
Total Expenditure	65,667	15%	132,135	31%	197,660	46%	32,600	8%	428,062
Surplus / (Deficit)	(1,938)		56,557		(163,246)		(5,618)		(114,245)

ERS- Expenditure

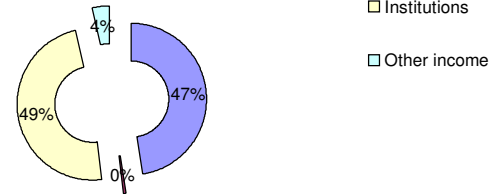
- Depreciation expense
- Programmes expenses



ERS - Income & Expenditure in summary



ERS- Income From



- Churches
- Council of Churches
- Institutions
- Other income

THE MIDDLE EAST COUNCIL OF CHURCHES

**Emergency Relief (ER)
Income & expenditure in summary**

	<u>Audited</u>				<u>Un-audited</u>				
	Total 2004		Total 2005		Total 2006			Total 2007	
	US\$	%	US\$	%	US\$	%	US\$		
Income									
Churches	-	0%	-	0%	37,310	97%	1,067	3%	38,377
Membership Fees	-	0%	-	0%	785	100%	-	0%	785
Council of Churches	-	0%	-	0%	10,000	100%	-	0%	10,000
Institutions	-	0%	-	0%	3,470	100%	-	0%	3,470
Other income	-	0%	-	0%	500	100%	-	0%	500
Total Income	-	0%	-	0%	52,065	98%	1,067	2%	53,132
Expenditure									
Programmes	-	0%	-	0%	28,460	73%	10,589	27%	39,049
Total Expenditure	-	0%	-	0%	28,460	73%	10,589	27%	39,049
Surplus / (Deficit)	-		-		23,605		(9,522)		14,083

ER- Income & Expenditure in summary

